

Lousaper

Flood Series

Product Features

1. Energy Saving Technology.
2. High power LED floodlights offer an energy saving alternative to Halogen, Mercury, Sodium & Metal Halide flood lights.
3. Fin Shell (6063 Aluminium), stainless steel fittings and toughened glass construction makes Crest LED flood lights long life. Its epoxy powder coated paint finish ensures long life.
4. Low heat emission (low temperature).
5. Highly reliable constant current driver guarantees long life span of the lamp beads.
6. LED lights offer up to 85% saving in electricity cost compared to mercury, sodium & metal halide lamps and are designed to last for longer periods.
7. Eco-Friendly, mercury free, lead free.
8. Dimmable model optional.
9. Available In: 10 / 30 / 50 / 70 / 100 / 150 / 200 Watt.
10. IP Rating: IP65, IP66
11. 2 year warranty.
12. OEM service available.

Applications

Warehouse, Gymnasium, Parking Lot Illumination, Sign Board, Advertisement Board, Shopping Plaza, Athletic Field, Outdoor Lighting, Security Lighting, Playing Fields.

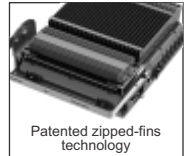
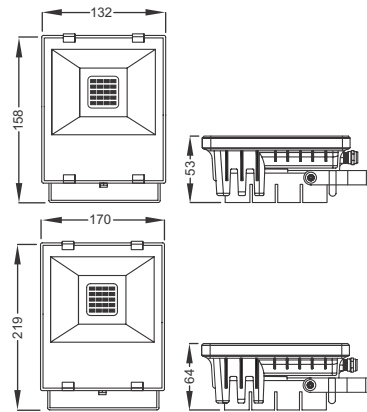
Notes

1. Operating temperature range between -40°C ~ $+50^{\circ}\text{C}$
2. Don't use it with dimmers.



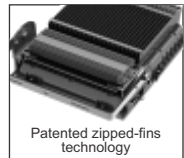
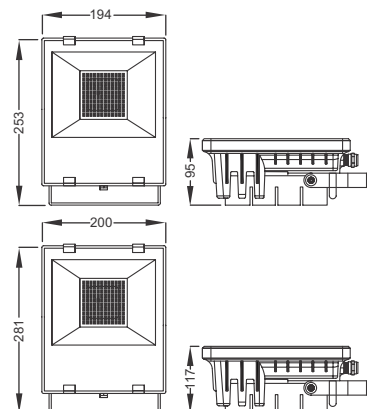
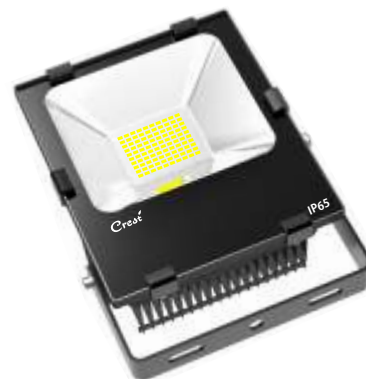
Specifications

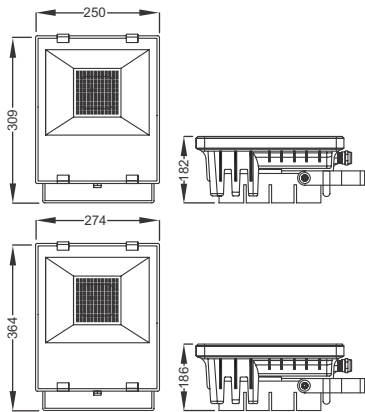
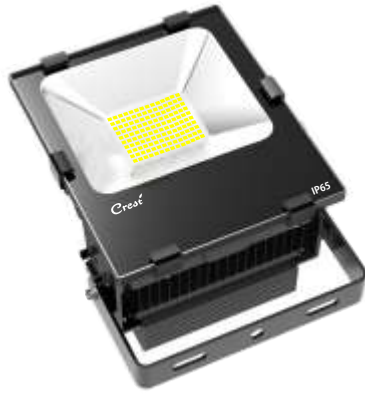
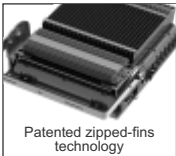
Order Code	CR-80011	CR-80012
Model	CR-TGA-FL	
Power	10W	30W
LED Description	20 Pcs	60 Pcs
LED	SMD	
LED Source	EDISON	
Luminous Flux	100~110 LM/W - (WW)	110~120LM/W - (CW)
Lumen Maintenance	L80	
Color Temperature Available (± 200K)	2700~3300K	5500~6500K
Beam Angle	120°	
Input Voltage	90~265VAC, 50/60 Hz	
CRI	Ra≥80	
Working Temperature	-40°C~+50°C	
Humidity	10%~90%	
Power Factor	≥0.90	
Protection Class	IP 65	
Housing Material	Fin Shell (6063 Aluminium) + Tempered glass	
Size (mm)	L158xW132xH53	L219xW170xH64
Weight (approx)	970 gm	1.770 kg
Life	@Tj = 85 °C 50,000 hrs	



Specifications

Order Code	CR-80013	CR-80014
Model	CR-TGA-FL	
Power	50W	70W
LED Description	100 Pcs	140 Pcs
LED	SMD	
LED Source	EDISON	
Luminous Flux	100~110 LM/W - (WW)	110~120LM/W - (CW)
Lumen Maintenance	L80	
Color Temperature Available (± 200K)	2700~3300K	5500~6500K
Beam Angle	120°	
Input Voltage	90~265VAC, 50/60 Hz	
CRI	Ra≥80	
Working Temperature	-40°C~+50°C	
Humidity	10%~90%	
Power Factor	≥0.90	≥0.95
LED Driver	Isolated (THD ≤20%)	
Protection Class	IP 65	
Housing Material	Fin Shell (6063 Aluminium) + Tempered glass	
Size (mm)	L253xW194xH95	L281xW200xH117
Weight (approx)	3.10 kg	5 kg
Life	@Tj = 85 °C 50,000 hrs	





Specifications

Order Code	CR-80015	CR-80016	CR-80017
Model	CR-TGA-FL		
Power	100W	150W	200W
LED Description	200 Pcs	300 Pcs	400 Pcs
LED	SMD		
LED Source	EDISON		
Luminous Flux	100~110 LM/W - (WW)	110~120LM/W - (CW)	
Lumen Maintenance	L80		
Color Temperature Available (± 200K)	2700~3300K	5500~6500K	
Beam Angle	120°		
Input Voltage	90~265VAC, 50/60 Hz		
CRI	Ra≥80		
Working Temperature	-40°C~+50°C		
Humidity	10%~90%		
Power Factor	≥0.95		
LED Driver	Isolated (THD ≤20%)		
Protection Class	IP 65		
Housing Material	Fin Shell (6063 Aluminium) + Tempered glass		
Size (mm)	L309xW250xH182	L364xW274xH186	L464xW320xH196
Weight (approx)	6.5 kg gm	11 kg	12.5 kg
Life	@Tj = 85 °C 50,000 hrs		



Specifications

Order Code	CR-80018	CR-80019
Model	CR-GKD370B-FL	
Power	70W	100W
LED Description	32 Pcs	48 Pcs
LED	SMD	
LED Source	CREE	
Luminous Flux	96 LM/W - (WW) 110 LM/W - (CW)	97 LM/W - (WW) 111 LM/W - (CW)
Color temperature Available (± 200K)	2700~3300K 5500~6500K	
Optional LED Source Available EVERLIGHT	91 LM/W - (WW) 104LM/W - (CW)	92 LM/W - (WW) 105LM/W - (CW)
Lumen Maintenance	L80	
Beam Angle	60° x 120° / 60° x 135°	
Input Voltage	90~265VAC, 50/60 Hz	
CRI	Ra≥80	
Working Temperature	-40°C~+50°C	
Humidity	10%~90%	
Power Factor	≥0.95	
LED Driver	Isolated (THD ≤20%)	
Protection Class	IP 66	
Housing Material	Front side is die-casting, and Back side (heat dissipation) is Extruded Aluminium.	
Size (mm)	L368xW160xH348	
Weight (approx)	12 kg	
Life	@Tj = 85 °C 50,000 hrs	

